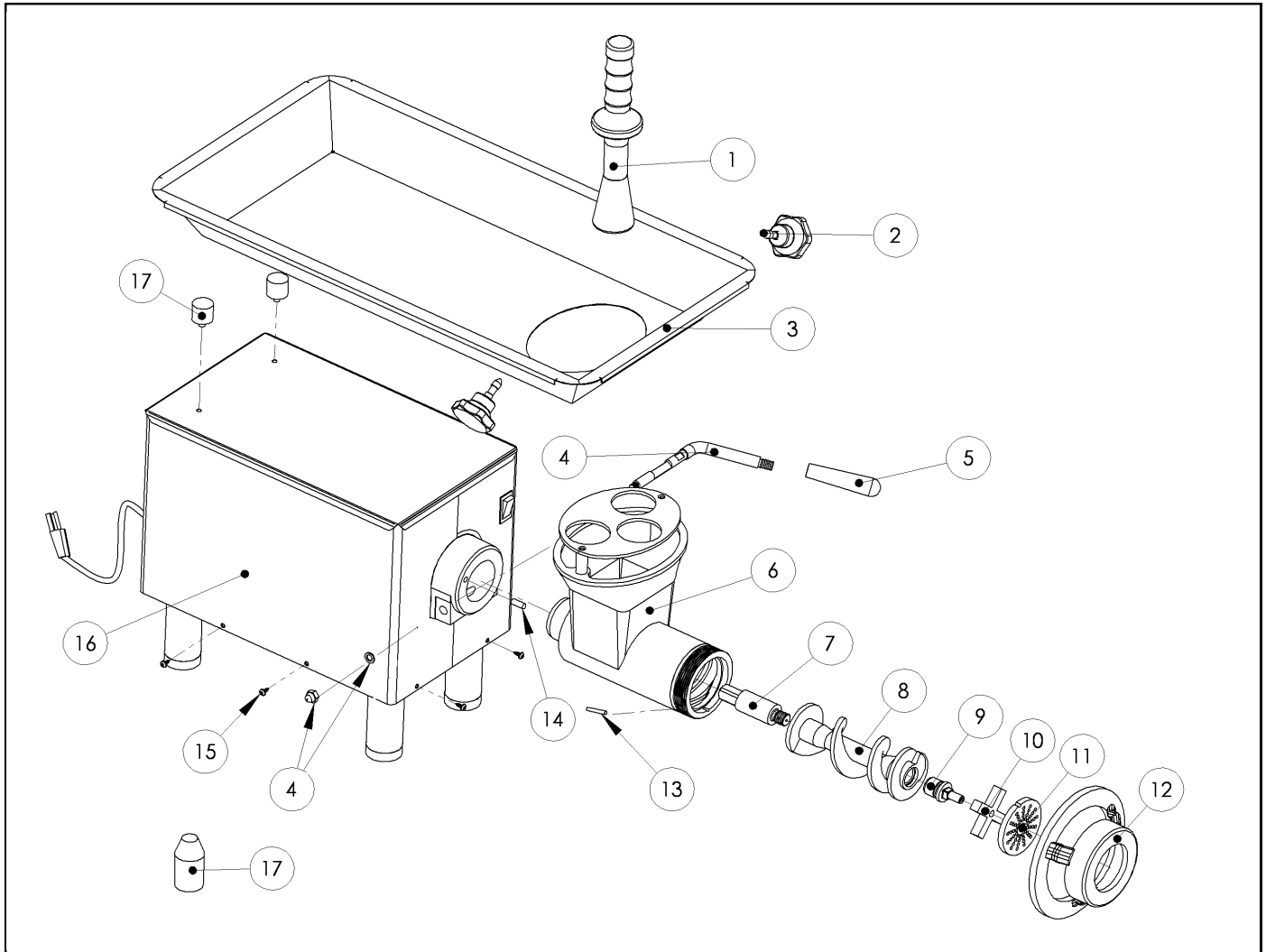
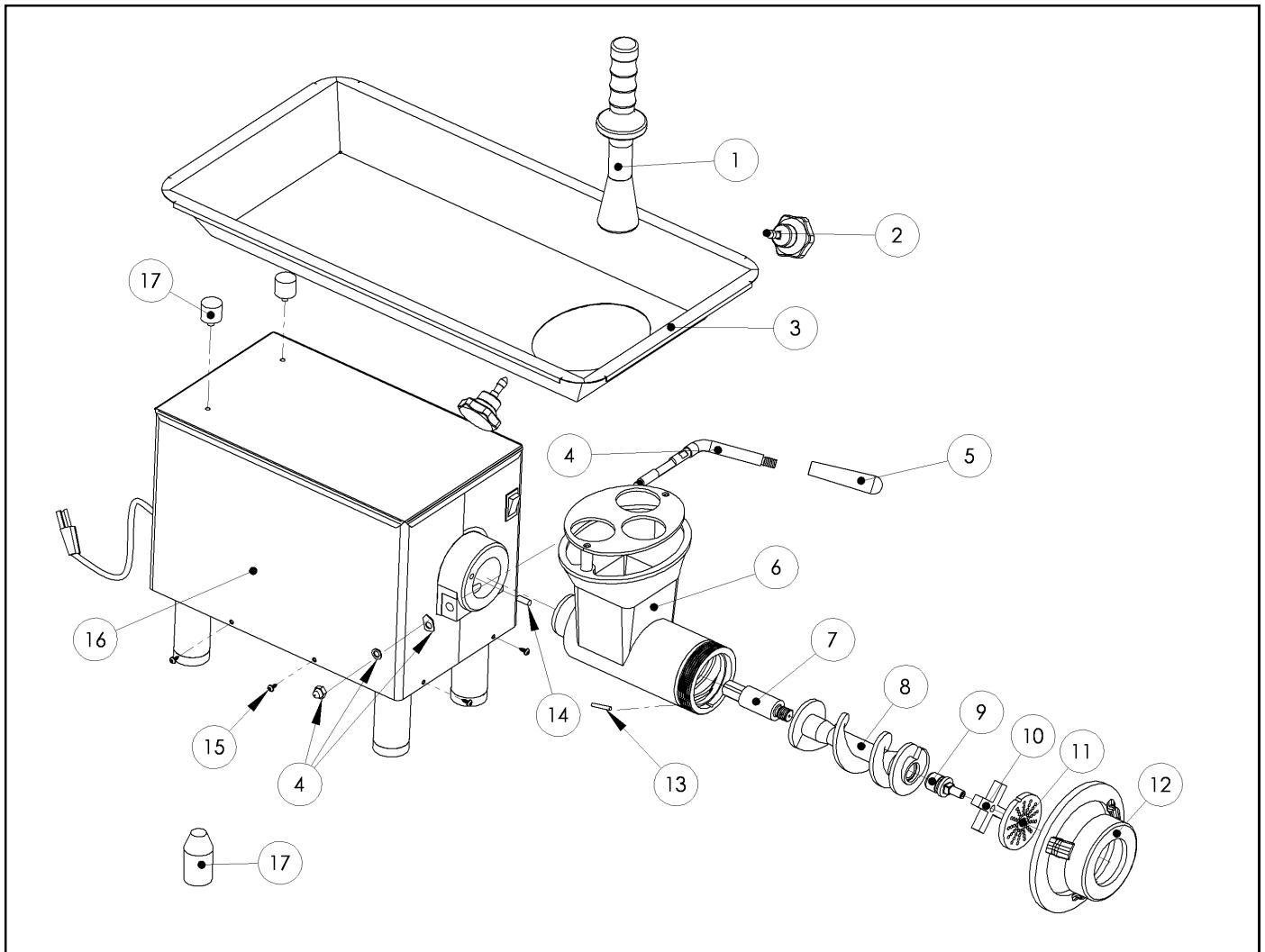


ITEM	DESCRIPCION	CODE	QTY.	R.S./100
1	1 HP MONOPHASE MOTOR 60 Hz	M501307	1	2
1	1 HP MONOPHASE MOTOR 50 Hz	M500175	1	2
2	GEAR BOX	M500189	1	4
3	TAPON GEAR BOX	M501101	1	5
4	GEAR BOX KIT	M571894	1	2
5	BOLTS HEX HEAD 3/8" X 1 1/4" AND WASHERS	M572819	4	2
6	BRONZE BUSHING	M500131	1	4
7	SLOT KEY	M500655	1	2
8	KEY 3/16" X 3/16" X 1 3/8"	M500403	1	2
9	GEAR (PINION)	M570193	1	2
10	DEAR (FLAT)	M570567	1	2
11	SLOT KEY 1/4" X 1/4" X 11/16"	M500324	1	2
12	WOODRUFF KEY #606-9	M500296	1	2
13	GEAR FOR SQUARED INNER COUPLIN 60 HZ	M575643	1	2
13	GEAR FOR SQUARED INNER COUPLIN 50 HZ	M576744	1	2
14	DOUBLE SHAFT GEAR 60 HZ	M572180	1	2
14	DOUBLE SHAFT GEAR 50HZ	M571351	1	2
15	SQUARED INNER COUPLING COVER	M500329	1	2
16	BRONZE BUSHING	M575641	1	4
17	GASKET	M500146	1	4
18	GEAR COVER KIT	M572408	1	2
19	BOLTS HEX HEAD 5/16"X 1 1/4"	M500408	6	5
20	AXIAL BALL BEARING	M506571	1	2
21	SQUARED INNER COUPLING FOR GEAR	M575642	1	2
22	SEAL # 12545	M506572	1	2
23	PIN 3/8" X 1"	M501588	2	2
	GEAR KIT M-22RW 60 Hz	M572409	1	1
	GEAR KIT M-22RW 50 Hz	M572410	1	1

R.S.=REQUERIMENT STOCK

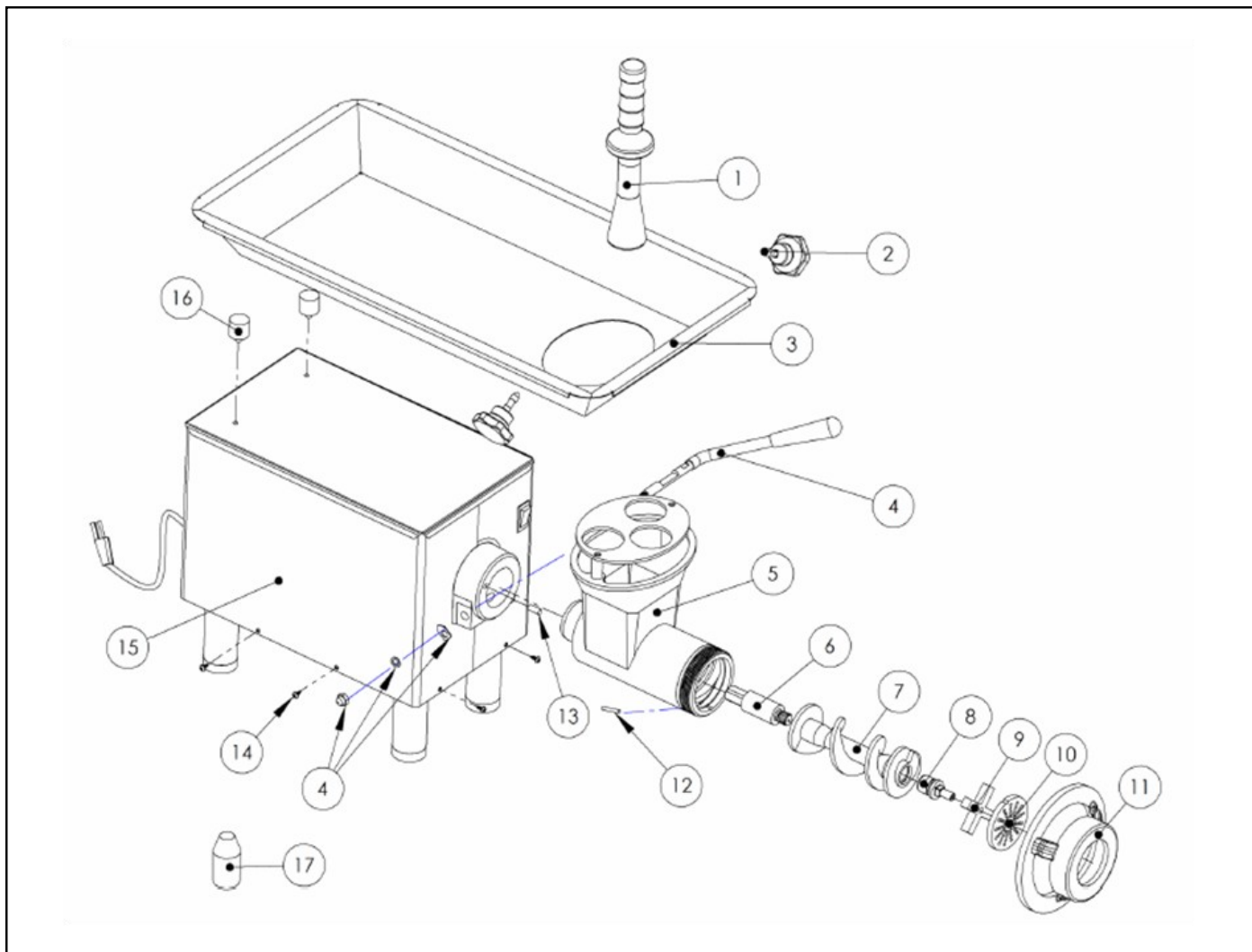


ITEM	DESCRIPCION	CODE	QTY	R.S./100
1	STOMPER	M501794	1	10
2	TRAY KNOB	M570422	2	10
3	STAINLESS STEEL PRODUCT TRAY.	M571576	1	2
4	HANDLE AND ACORN NUT	M572411	1	5
5	HANDLE KNOB	M501488	1	20
6	HEADSTOCK	M575636	1	2
7	REARROD	M506586	1	2
8	FEED SCREW (WORM)	M575280	1	2
9	FRONT ROD	M570201	1	10
10	KNIFE	M332222	1	20
11	PLATE	M341012	1	10
12	HEADSTOCK RING	M570383	1	2
13	PIN 3/16" X 2 1/16"	M570228	1	20
14	PIN 5/16" X 3/4" S.S.	M501134	1	5
15	SELF TAPPING BOLT 8-32	M503427	8	5
16	CASE AND THERMIC-ISOLATING ASSY.	M572690	1	2
17	BUMPER (RUBBER)	M575556	2	20



ITEM	DESCRIPCION	CODE	QTY	R.S./100
1	STOMPER	M501794	1	10
2	TRAY KNOB	M570422	2	10
3	STAINLESS STEEL PRODUCT TRAY.	M571576	1	2
4	HANDLE AND ACORN NUT	M572411	1	5
5	HANDLE KNOB	M501488	1	20
6	HEADSTOCK	M575636	1	2
7	FEED SCREW (WORM)	M506586	1	2
8	FEED SCREW (WORM)	M575280	1	2
9	FRONT ROD	M570201	1	10
10	KNIFE	M332222	1	20
11	PLATE	M341012	1	10
12	HEADSTOCK RING	M570383	1	2
13	PIN 3/16" X 2 1/16"	M570228	1	20
14	PIN 5/16" X 3/4" S.S.	M501134	1	5
15	SELF TAPPING BOLT 8-32	M503427	8	5
16	CASE AND THERMIC-ISOLATING ASSY.	M572690	1	2
17	BUMPER (RUBBER)	M575556	2	20

**NOTA: IS ADDED TO THE TOP OF THE LEVER KIT FROM THE SERIES K08-261**

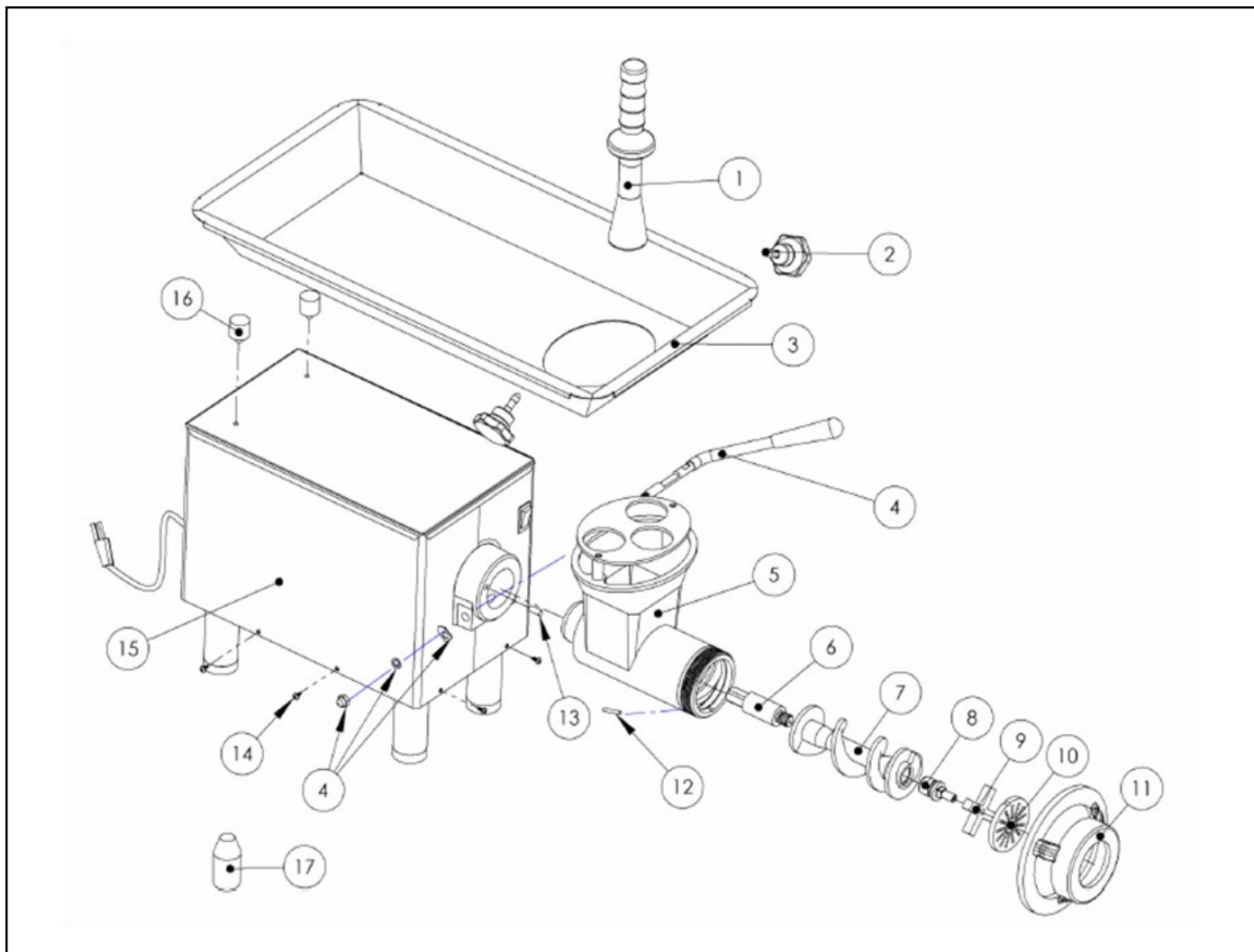


ITEM	DESCRIPCION	CODE	QTY	R.S./100
1	STOMPER	M501794	1	10
2	TRAY KNOB	M570422	2	10
3	STAINLESS STEEL PRODUCT TRAY.	M571576	1	2
4	HANDLE AND ACORN NUT	M572411	1	5
5	HANDLE KNOB	M575636	1	2
6	HEADSTOCK	M506586	1	2
7	FEED SCREW (WORM)	M575280	1	2
8	FEED SCREW (WORM)	M570201	1	10
9	FRONT ROD	M332222	1	20
10	KNIFE	M341012	1	10
11	PLATE	M570383	1	2
12	HEADSTOCK RING	M570228	1	20
13	PIN 3/16" X 2 1/16"	M501134	1	5
14	PIN 5/16" X 3/4" S.S.	M503427	8	5
15	SELF TAPPING BOLT 8-32	M572690	1	2
16	CASE AND THERMIC-ISOLATING ASSY.	M575556	2	20
17	BUMPER (RUBBER)	M501572	1	4

NOTE: INCLUDES KNOB FOR HANDLE STARTING FROM SERIAL NUMBER: K09-1048

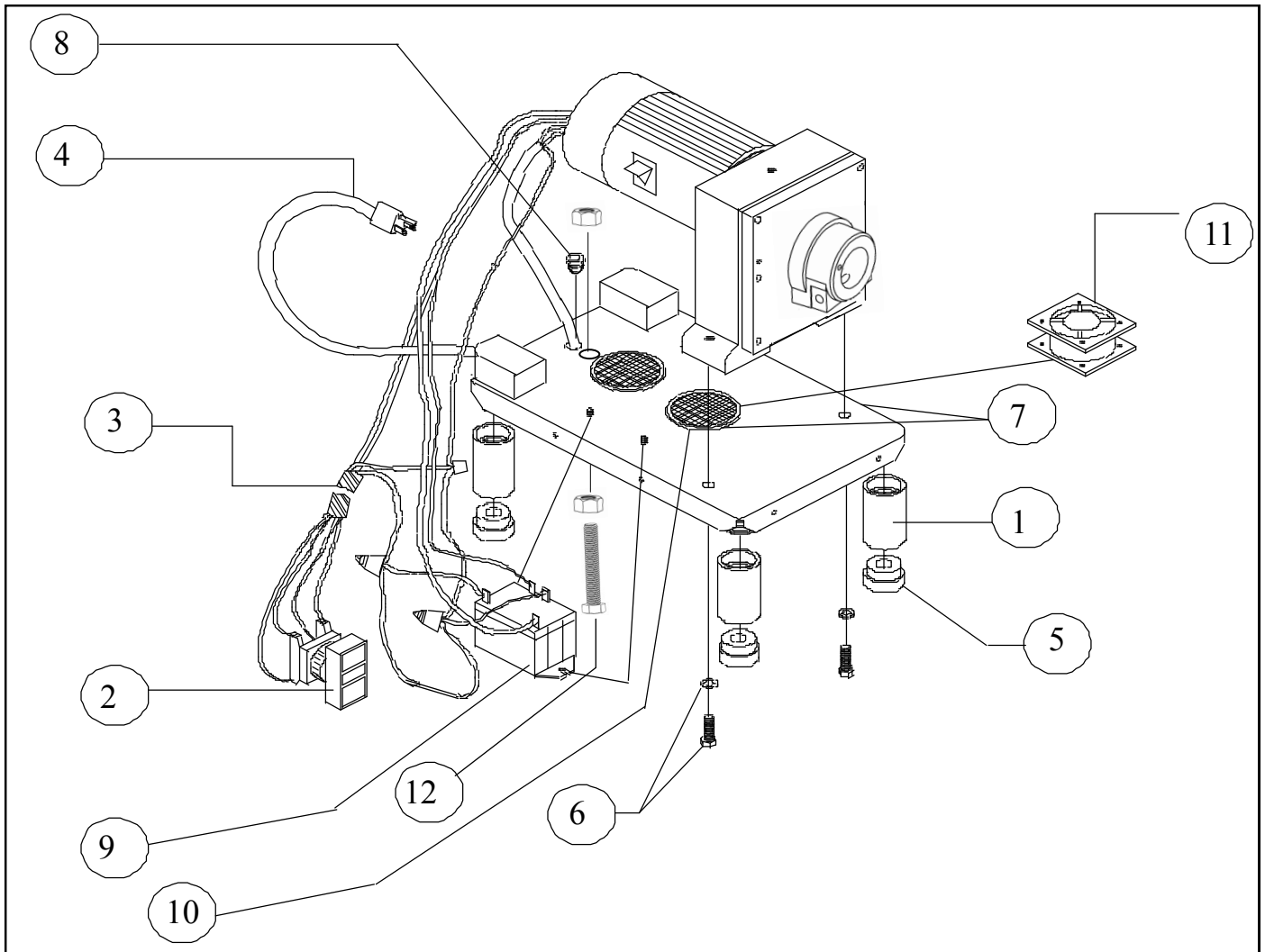


\* FROM SERIAL NUMBER: D09-1500



ITEM	DESCRIPCION	CODE	QTY	R.S./100
1	STOMPER	M501794	1	10
2	TRAY KNOB	M570422	2	10
3	STAINLESS STEEL PRODUCT TRAY.	M571576	1	2
4	HANDLE AND ACORN NUT	M572411	1	5
5	HANDLE KNOB	M575636	1	2
*6	HEADSTOCK	M573789	1	2
7	FEED SCREW (WORM)	M575280	1	2
8	FEED SCREW (WORM)	M570201	1	10
9	FRONT ROD	M332222	1	20
10	KNIFE	M341012	1	10
11	PLATE	M570383	1	2
12	HEADSTOCK RING	M570228	1	20
13	PIN 3/16" X 2 1/16"	M501134	1	5
14	PIN 5/16" X 3/4" S.S.	M503427	8	5
15	SELF TAPPING BOLT 8-32	M572690	1	2
16	CASE AND THERMIC-ISOLATING ASSY.	M530335	2	20
17	BUMPER (RUBBER)	M501572	1	4

NOTE: INCLUDES KNOB FOR HANDLE STARTING FROM SERIAL NUMBER: K09-1048



ITEM	DESCRIPCION	CODE	QTY	R.S./100
1	4 3/4" ALUMINIUM LEG	M571407	4	2
2	DOUBLE BUTTON SWITCH	M501802	1	4
3	2 x 14 SJT UL APP CABLE W/ARNES.	M500850	1	2
4	CE CORD KIT	M500154	1	2
5	RUBBER PLUG-PAD	M500333	4	2
6	BOLTS HEX HEAD 7/16" X 1 1/4" AND WASHER	M571904	2	2
7	BASE AND BASE LID ASSY.	M572705	1	2
8	GROMMET MP7P-2	M500799	1	2
9	CONTACTOR 220	M504848	1	2
10	BASE LID	M500325	2	4
11	230 VCA AXIAL FAN	M501291	1	2
12	MOTOR SUPPORT SCREW	M575680	1	1