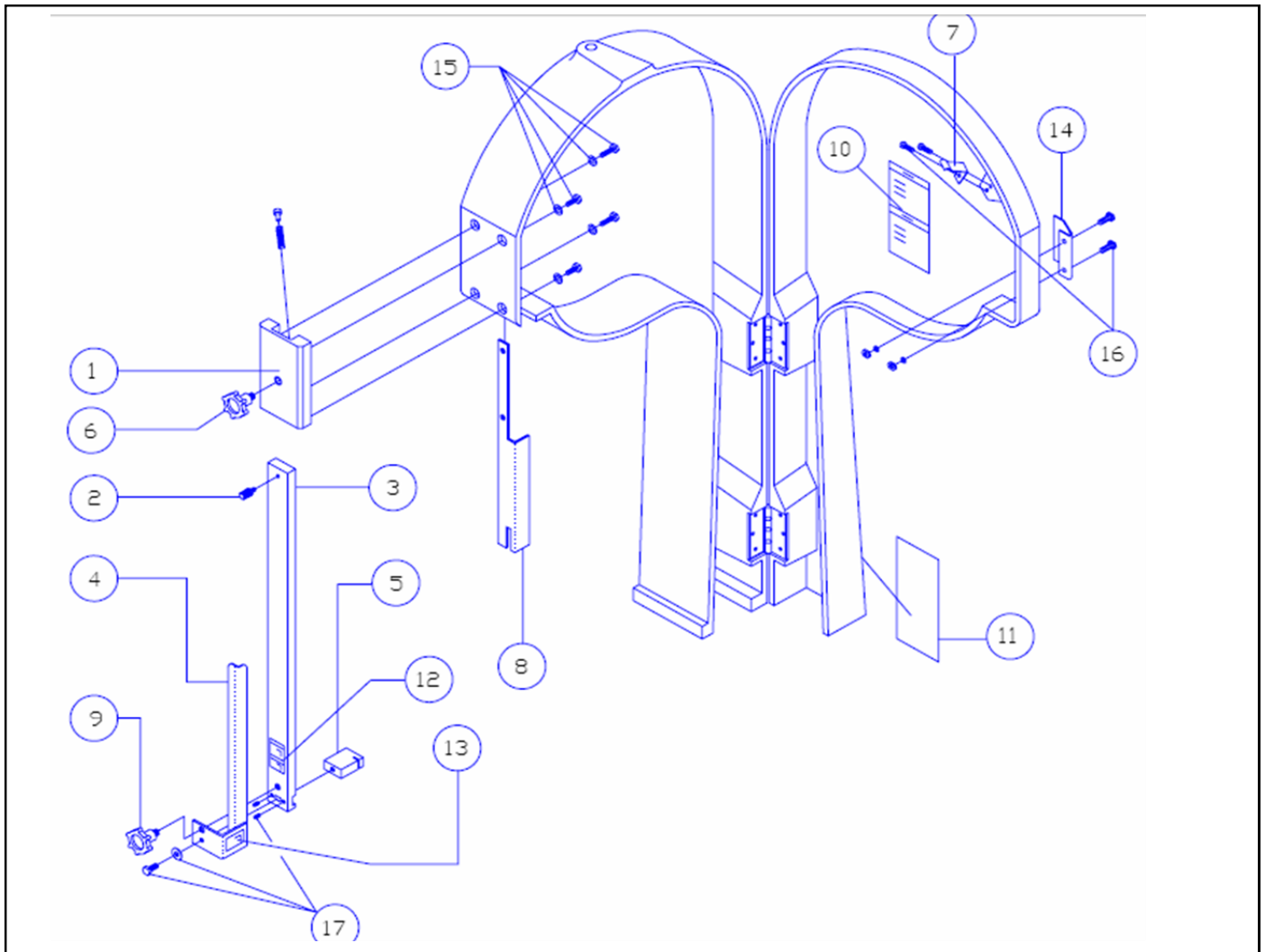


| ITEM. | DESCRIPTION | CODE | QTY. | I.S./100 |
|-------|-----------------------------|---------|------|----------|
| 1 | SLIDING BAR GUIDE KIT | M571864 | 1 | 2 |
| *2 | UPPER KNOB | M570779 | 1 | 4 |
| 3 | SLIDING BAR KIT | M571891 | 1 | 2 |
| 4 | LOWER BLADE GUARD KIT | M571892 | 1 | 2 |
| **5 | UPPER SAW GUIDE S.S. | M570835 | 1 | 2 |
| 6 | KNOB | M571295 | 1 | 2 |
| 7 | DOOR SPRING LATCH KIT | M571819 | 1 | 20 |
| 8 | UPPER BLADE GUARD S.S. | M571600 | 1 | 2 |
| 9 | KNOB | M571606 | 1 | 2 |
| 10 | DANGER DECAL | M501255 | 1 | 2 |
| 11 | WARNING DECAL | M501254 | 1 | 2 |
| 12 | DANGER DECAL | M501256 | 1 | 2 |
| 13 | DANGER DECAL | M501257 | 1 | 2 |
| 14 | DOOR HANDLE S.S. KIT | M571818 | 2 | 4 |
| 15 | BOLTS AND WASHERS KIT | M572304 | 1 | 2 |
| 16 | BOLTS, NUTS AND WASHERS KIT | M572305 | 1 | 2 |
| 17 | BOLTS AND WASHERS KIT | M572306 | 1 | 2 |

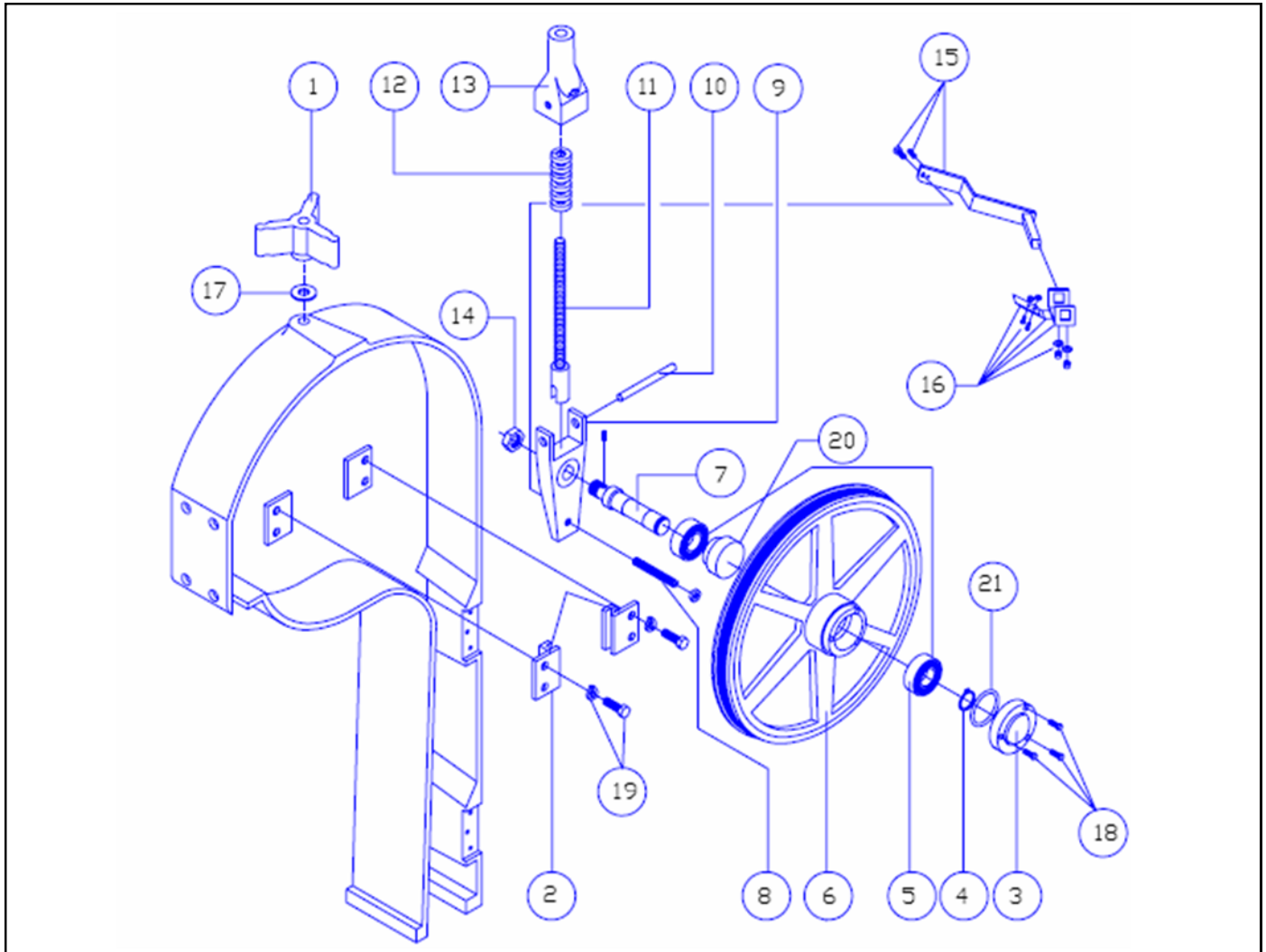


| ITEM. | DESCRIPTION | CODE | QTY. | I.S./100 |
|-------|-----------------------------|---------|------|----------|
| 1 | SLIDING BAR GUIDE KIT | M571864 | 1 | 2 |
| 2 | UPPER KNOB | M570426 | 1 | 4 |
| 3 | SLIDING BAR KIT | M571595 | 1 | 2 |
| 4 | LOWER BLADE GUARD KIT | M571892 | 1 | 2 |
| *5 | UPPER SAW GUIDE S.S. | M570513 | 1 | 2 |
| 6 | KNOB | M571295 | 1 | 2 |
| 7 | DOOR SPRING LATCH KIT | M571819 | 1 | 20 |
| 8 | UPPER BLADE GUARD S.S. | M571600 | 1 | 2 |
| 9 | KNOB | M571606 | 1 | 2 |
| 10 | DANGER DECAL | M501255 | 1 | 2 |
| 11 | WARNING DECAL | M501254 | 1 | 2 |
| 12 | DANGER DECAL | M501256 | 1 | 2 |
| 13 | DANGER DECAL | M501257 | 1 | 2 |
| 14 | DOOR HANDLE S.S. KIT | M571818 | 2 | 4 |
| 15 | BOLTS AND WASHERS KIT | M572304 | 1 | 2 |
| 16 | BOLTS, NUTS AND WASHERS KIT | M572305 | 1 | 2 |
| 17 | BOLTS AND WASHERS KIT | M572306 | 1 | 2 |

* IT CHANGE FROM SERIAL NUMBER : G08-45557



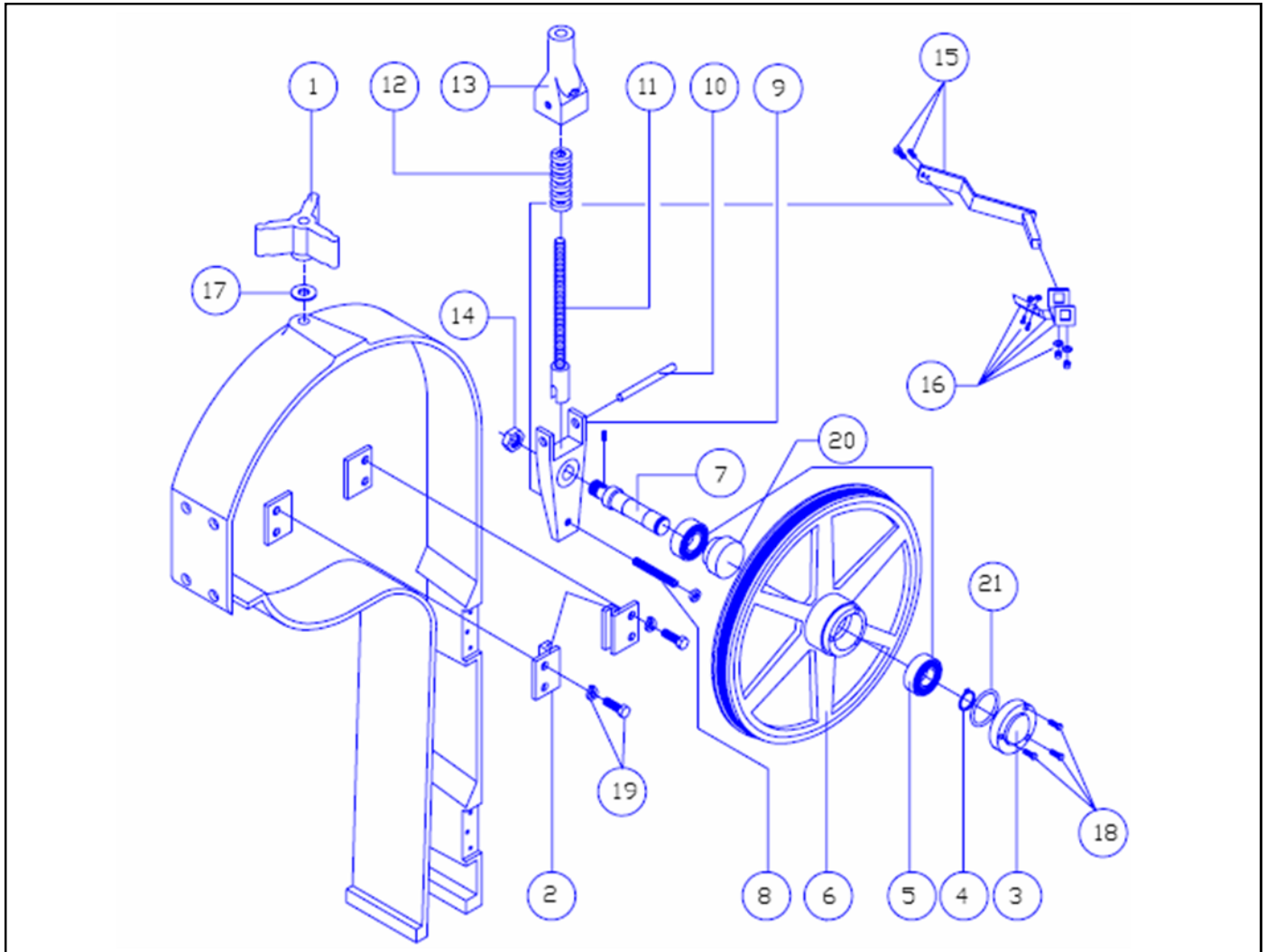
STARTING FROM SERIAL NUMER : 30,339



| ITEM. | DESCRIPTION | CODE | QTY. | I.S./100 |
|-------|------------------------------------------------------|---------|------|----------|
| *1 | TENSION HANDLE KIT | M571869 | 1 | 2 |
| 2 | TENSION GUIDES KIT | M571823 | 1 | 4 |
| 3 | BEARING CAP KIT | M571824 | 2 | 4 |
| 4 | RETAINER RING 5100-98 | M500282 | 1 | 2 |
| 5 | BEARING 6205 | M500185 | 2 | 4 |
| 6 | UPPER WHEEL | M571540 | 1 | 2 |
| 7 | UPPER SHAFT KIT | M571825 | 1 | 2 |
| *8 | ADJUSTING SCREW S.S. KIT | M571873 | 1 | 2 |
| 9 | UPPER WHEEL HANGER | M571536 | 1 | 2 |
| *10 | TENSION GAUGE PIN S.S. | M570656 | 1 | 2 |
| *11 | ROD S.S. & INDICATOR 1/2" | M571535 | 1 | 2 |
| 12 | TENSION GAUGE SPRING | M500290 | 1 | 8 |
| 13 | TENSION GAUGE HOUSING | M571534 | 1 | 2 |
| 14 | HEX. NUT 3/4" (NF) | M570419 | 1 | 2 |
| 15 | UPPER WHEEL SCRAPER ARM S.S. KIT | M572679 | 1 | 2 |
| 16 | UPPER WHEEL SCRAPER (CLEANER) KIT | M572680 | 1 | 4 |
| *17 | FLAT WASHER 1/2" S.S. | M500766 | 1 | 2 |
| *18 | BOLTS 3/16" S.S. KIT | M572793 | 1 | 2 |
| 19 | BOLTS AND LOCK WASHER 3/8" S.S. KIT | M572311 | 1 | 2 |
| 20 | RUBBER GASKET | M501029 | 1 | 2 |
| 21 | O-RING GASKET #145 | M501027 | 1 | 2 |
| | UPPER WHEEL KIT, INCLUDES ITEMS 3 THROUGH 7,14,20,21 | M571546 | 1 | 2 |
| | TENSION KIT, INCLUDES ITEMS 9 THROUGH 13. | M571551 | 1 | 2 |



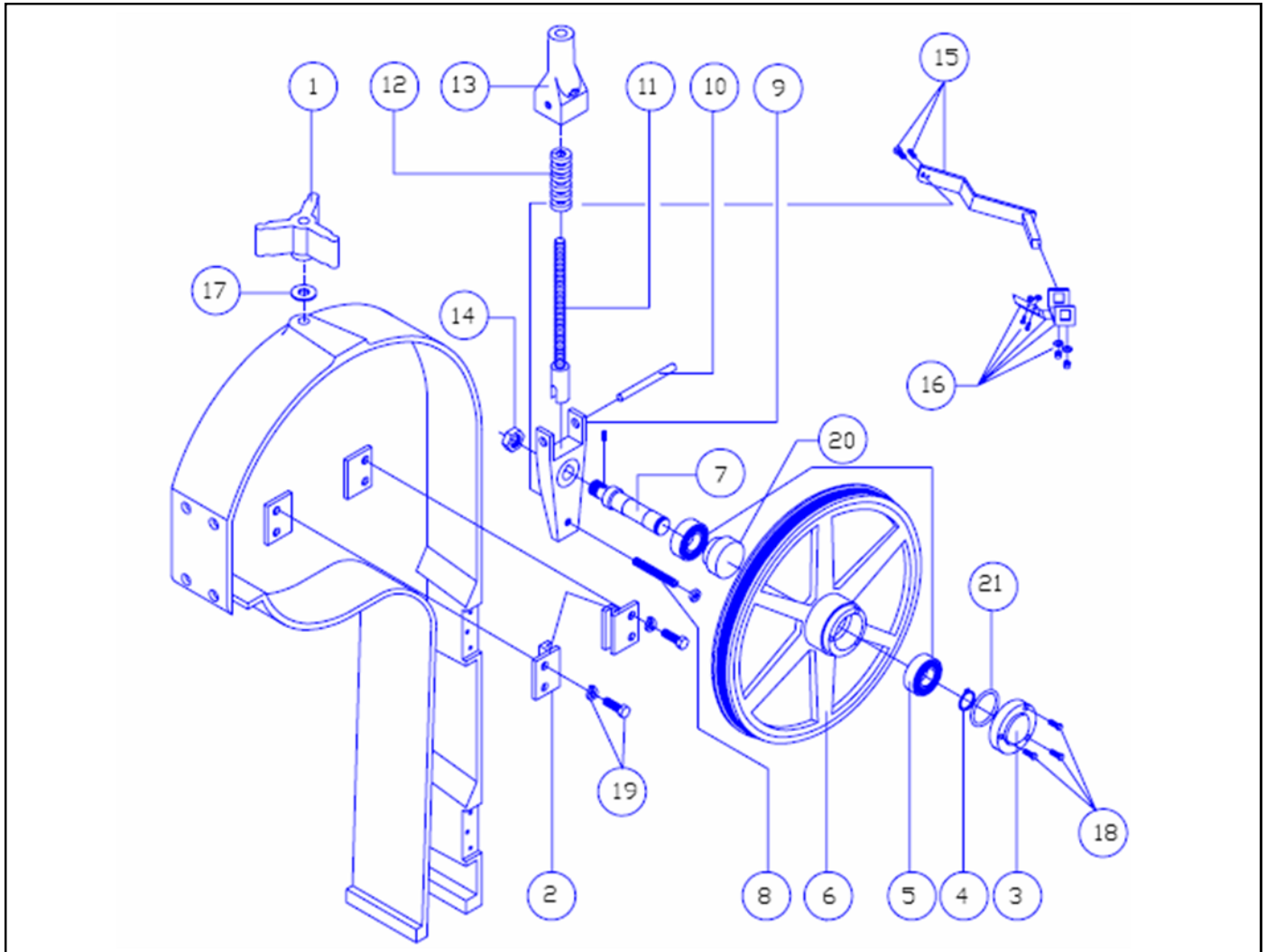
STARTING FROM SERIAL NUMER : D09-46270



| ITEM. | DESCRIPTION | CODE | QTY. | I.S./100 |
|-------|-------------------------------------------------------|---------|------|----------|
| 1 | TENSION HANDLE KIT | M571869 | 1 | 2 |
| 2 | TENSION GUIDES KIT | M571823 | 1 | 4 |
| 3 | BEARING CAP KIT | M571824 | 2 | 4 |
| 4 | RETAINER RING 5100-98 | M500282 | 1 | 2 |
| *5 | BEARING 6205 | M504065 | 2 | 4 |
| 6 | UPPER WHEEL | M571540 | 1 | 2 |
| 7 | UPPER SHAFT KIT | M571825 | 1 | 2 |
| 8 | ADJUSTING SCREW S.S. KIT | M571873 | 1 | 2 |
| 9 | UPPER WHEEL HANGER | M571536 | 1 | 2 |
| 10 | TENSION GAUGE PIN S.S. | M570656 | 1 | 2 |
| 11 | ROD S.S. & INDICATOR 1/2" | M571535 | 1 | 2 |
| 12 | TENSION GAUGE SPRING | M500290 | 1 | 8 |
| 13 | TENSION GAUGE HOUSING | M571534 | 1 | 2 |
| 14 | HEX. NUT 3/4" N.F. | M570419 | 1 | 2 |
| 15 | UPPER WHEEL SCRAPER ARM S.S. KIT | M572679 | 1 | 2 |
| 16 | UPPER WHEEL SCRAPER (CLEANER) KIT | M572680 | 1 | 4 |
| 17 | FLAT WASHER 1/2" S.S. | M500766 | 1 | 2 |
| 18 | BOLTS 3/16 S.S. KIT | M572793 | 1 | 2 |
| 19 | BOLTS AND THOOT LOCK WASHER 3/8" S.S. KIT | M572311 | 1 | 2 |
| 20 | RUBBER GASKET | M501029 | 1 | 2 |
| 21 | O-RING GASKET #145 | M501027 | 1 | 2 |
| | UPPER WHEEL KIT, INCLUDES ITEMS 3 THROUGH 7,14,20, 21 | M571546 | 1 | 2 |
| | TENSION KIT, INCLUDES ITEMS 9 THROUGH 13. | M571551 | 1 | 2 |



STARTING FROM SERIAL NUMER : F09-31218

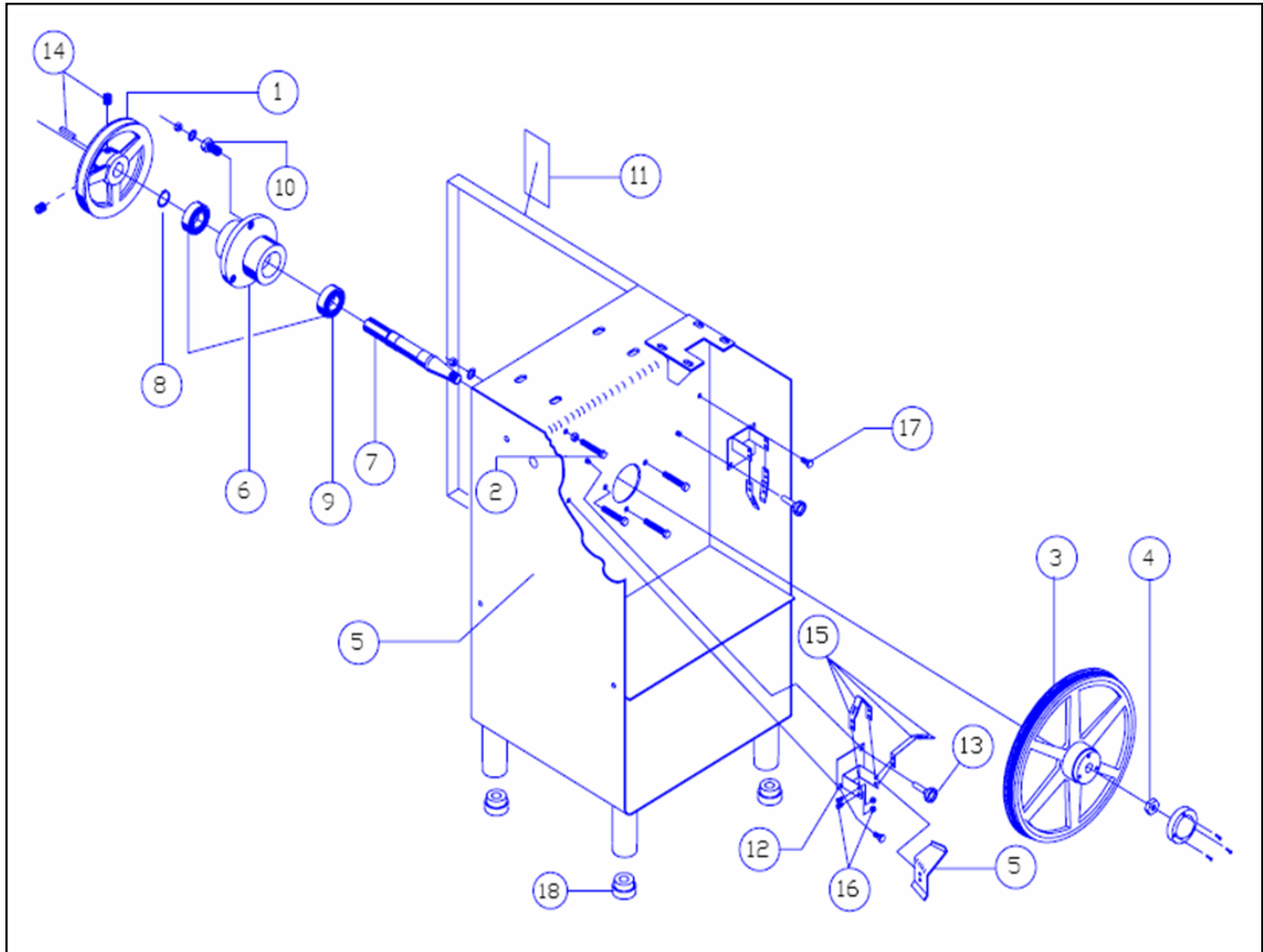


| ITEM. | DESCRIPTION | CODE | QTY. | I.S./100 |
|-------|-------------------------------------------------------|---------|------|----------|
| 1 | TENSION HANDLE KIT | M571869 | 1 | 2 |
| 2 | TENSION GUIDES KIT | M571823 | 1 | 4 |
| *3 | BEARING CAP KIT | M571824 | 2 | 4 |
| 4 | RETAINER RING 5100-98 | M500282 | 1 | 2 |
| 5 | BEARING 6205 | M500185 | 2 | 4 |
| 6 | UPPER WHEEL | M571540 | 1 | 2 |
| 7 | UPPER SHAFT KIT | M571825 | 1 | 2 |
| 8 | ADJUSTING SCREW S.S. KIT | M571873 | 1 | 2 |
| 9 | UPPER WHEEL HANGER | M571536 | 1 | 2 |
| 10 | TENSION GAUGE PIN S.S. | M570656 | 1 | 2 |
| 11 | ROD S.S. & INDICATOR 1/2" | M571535 | 1 | 2 |
| 12 | TENSION GAUGE SPRING | M500290 | 1 | 8 |
| 13 | TENSION GAUGE HOUSING | M571534 | 1 | 2 |
| 14 | HEX. NUT 3/4" N.F. | M570419 | 1 | 2 |
| 15 | UPPER WHEEL SCRAPER ARM S.S. KIT | M572679 | 1 | 2 |
| 16 | UPPER WHEEL SCRAPER (CLEANER) KIT | M572680 | 1 | 4 |
| 17 | FLAT WASHER 1/2" S.S. | M500766 | 1 | 2 |
| 18 | BOLTS 3/16 S.S. KIT | M572793 | 1 | 2 |
| 19 | BOLTS AND THOOT LOCK WASHER 3/8" S.S. KIT | M572311 | 1 | 2 |
| 20 | RUBBER GASKET | M501029 | 1 | 2 |
| 21 | O-RING GASKET #145 | M501027 | 1 | 2 |
| | UPPER WHEEL KIT, INCLUDES ITEMS 3 THROUGH 7,14,20, 21 | M571546 | 1 | 2 |
| | TENSION KIT, INCLUDES ITEMS 9 THROUGH 13. | M571551 | 1 | 2 |

* FROM SERIAL NUMBER # F09-31218, CHANGE TYPE MATERIAL



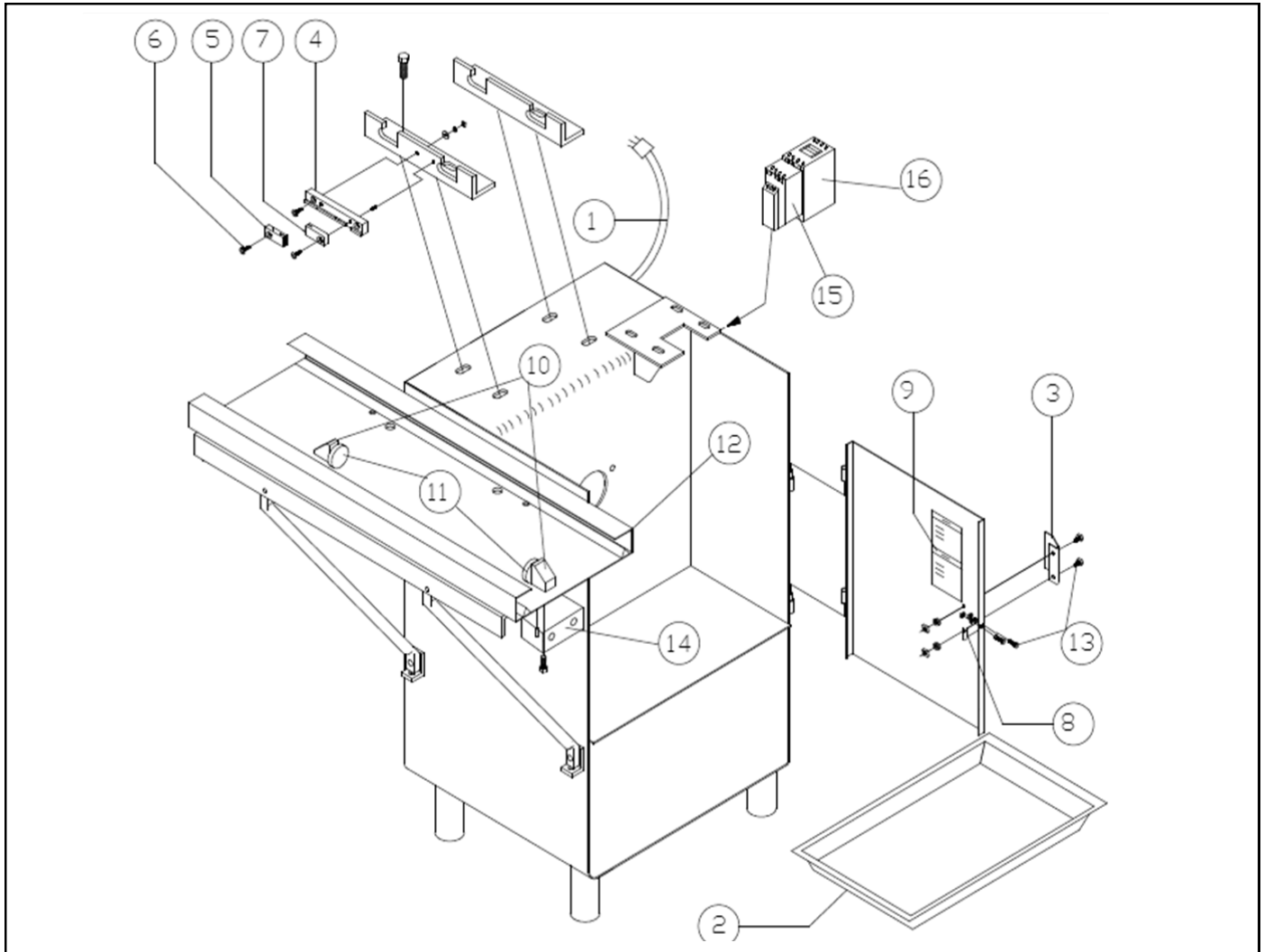
STARTING FROM SERIAL NUMER : D09-46270



| ITEM | DESCRIPTION | CODE | QTY. | I.S./100 |
|------|-------------------------------------------|---------|------|----------|
| 1 | PULLEY 8" KIT ø8" 60Hz | M571876 | 1 | 2 |
| 2 | SUPPORT BOLT (CARBIDE END) KIT | M571830 | 1 | 2 |
| 3 | LOWER WHEEL 14"ø | M571542 | 1 | 2 |
| 4 | HEX. NUT 3/4" (NF) | M570419 | 1 | 2 |
| 5 | SIDING S.S. | M572081 | 1 | 2 |
| 6 | LOWER MAIN BEARING HOUSING | M571533 | 1 | 2 |
| 7 | LOWER SHAFT KIT S.S. | M571832 | 1 | 2 |
| 8 | RETAINER RING 5100-118 | M500283 | 1 | 2 |
| *9 | BEARING 6206 | M500186 | 2 | 4 |
| 10 | ADJUSTING BOLT | M571833 | 3 | 2 |
| 11 | WARNING DECAL | M501253 | 1 | 2 |
| 12 | WHEEL SCRAPER BASE S.S. | M572345 | 2 | 2 |
| 13 | KNOB WITH NUT | M572830 | 2 | 2 |
| 14 | KEY AND SOCKET SET SCREW KIT | M572315 | 1 | 2 |
| 15 | WHEEL SCRAPER & SPRING (LOWER) KIT | M572681 | 1 | 2 |
| 16 | BOLTS AND NUTS S.S. FOR WHEEL SCRAPER KIT | M572682 | 1 | 2 |
| 17 | BOLTS AND NUTS S.S. FOR SCRAPER BASE | M571215 | 1 | 2 |
| 18 | RUBBER PLUG | M500837 | 4 | 2 |

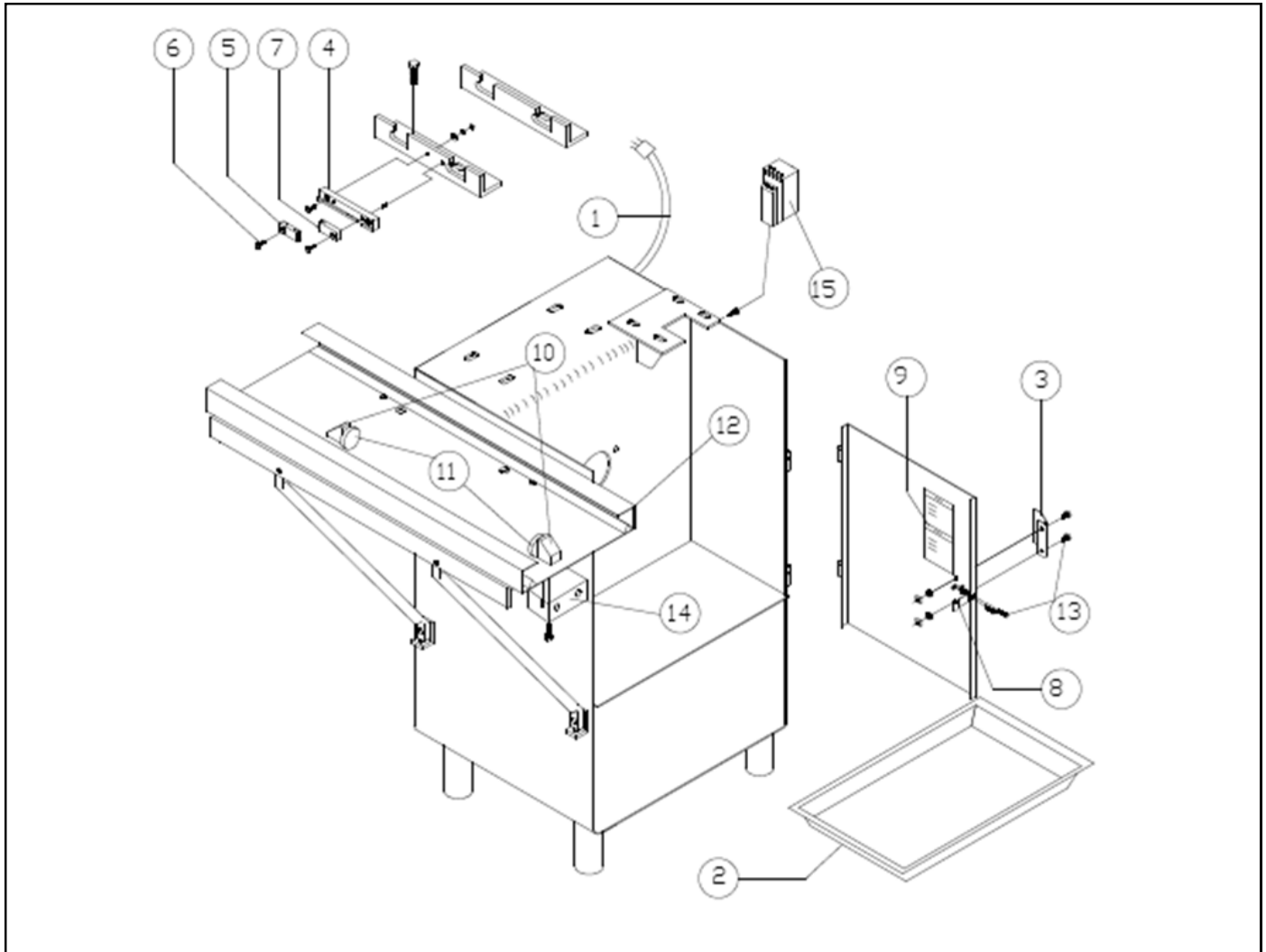
PULLEY 10" ø KIT (50Hz) M573214 1 2
 LOWER MAIN BEARING HOUSING ASSY. M570995 1 2
 INCLUDES ITEMS 6 THROUGH 10.

* STARTING FROM SERIAL
NUMBER : D09-46270



| ITEM. | DESCRIPTION | CODE | QTY. | I.S./100 |
|-------|-------------------------------------------|---------|------|----------|
| 1 | POWER CORD 3 PHASE (UL) | M500154 | 1 | 2 |
| 1 | POWER CORD SINGLE PHASE UL (NOT SHOWN) | M570856 | 1 | 2 |
| 2 | PAN (PLASTIC) | M500321 | 1 | 4 |
| 3 | PAN HANDLE KIT | M571818 | 1 | 4 |
| 4 | GUIDES BASE KIT | M571836 | 1 | 2 |
| 5 | LOWER GUIDE (S.S.) | M570844 | 1 | 1 |
| 6 | BOLT ROUND HEAD 1/4" x 1/2" | M500198 | 2 | 2 |
| 7 | FIBER GUIDE (MICARTA) | M570140 | 1 | 100 |
| 8 | DOOR SPRING KIT | M571820 | 1 | 20 |
| 9 | DANGER DECAL | M501255 | 1 | 2 |
| **10 | STOP CARRIAGE "V" BLOCK KIT | M573218 | 2 | 2 |
| 11 | STOP CARRIAGE BUMPER | M571290 | 2 | 4 |
| **12 | CARRIAGE GUIDE TYPE "V" ASSY. S.S. | M573117 | 1 | 2 |
| 13 | BOLTS, NUTS AND WASHER KIT | M572301 | 1 | 2 |
| ***14 | PUSH BUTTON BOX KIT | M502135 | 1 | 2 |
| ***15 | THERMAL RELAY S+S CT3-23 16-23A 110V | M502259 | 1 | 2 |
| ***15 | THERMAL RELAY S+S CT3-12.5 8.5-12.5A 220V | M502258 | 1 | 2 |
| ***16 | CONTACTOR S+S CA3-23-10 110V | M502250 | 1 | 2 |
| ***16 | CONTACTOR S+S CA3-12-10 220V | M502251 | 1 | 2 |

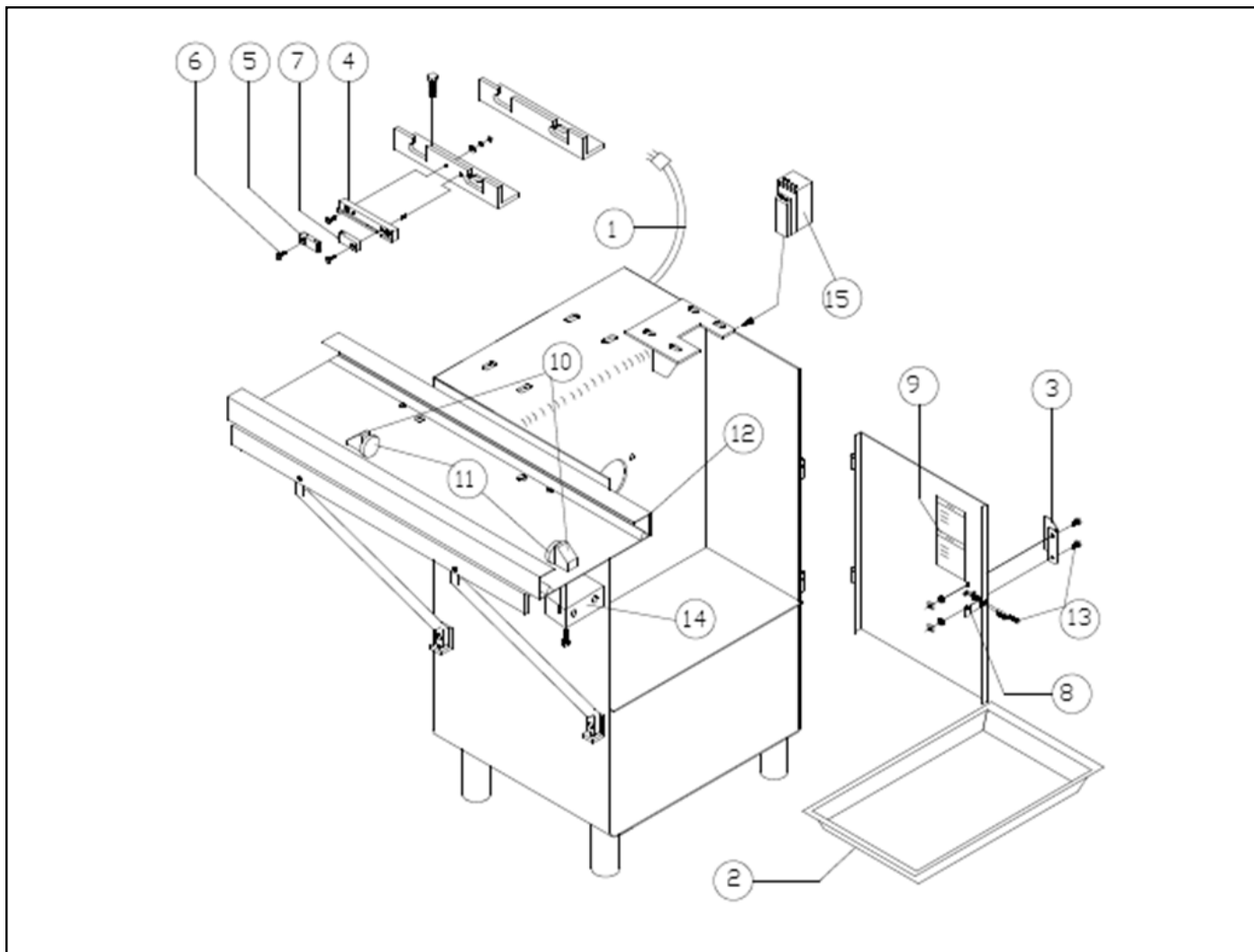
S+S= SPRECHER + SCHUH



| ITEM. | DESCRIPTION | CODE | QTY. | I.S./100 |
|-------|----------------------------------------|---------|------|----------|
| 1 | POWER CORD 3 PHASE (UL) | M500154 | 1 | 2 |
| 1 | POWER CORD SINGLE PHASE UL (NOT SHOWN) | M570856 | 1 | 2 |
| 2 | PAN (PLASTIC) | M500321 | 1 | 4 |
| 3 | PAN HANDLE KIT | M571818 | 1 | 4 |
| 4 | GUIDES BASE KIT | M571836 | 1 | 2 |
| 5 | LOWER GUIDE (S.S.) | M570844 | 1 | 1 |
| 6 | BOLT ROUND HEAD 1/4" x 1/2" | M500198 | 2 | 2 |
| 7 | FIBER GUIDE (MICARTA) | M570140 | 1 | 100 |
| 8 | DOOR SPRING KIT | M571820 | 1 | 20 |
| 9 | DANGER DECAL | M501255 | 1 | 2 |
| 10 | STOP CARRIAGE "V" BLOCK KIT | M573218 | 2 | 2 |
| 11 | STOP CARRIAGE BUMPER | M571290 | 2 | 4 |
| 12 | CARRIAGE GUIDE TYPE "V" ASSY. S.S. | M573117 | 1 | 2 |
| 13 | BOLTS, NUTS AND WASHER KIT | M572301 | 1 | 2 |
| 14 | PUSH BUTTON BOX KIT | M502135 | 1 | 2 |
| *15 | THERMAL RELAY FINDER 66.828 120 VAC | M503351 | 1 | 2 |
| *15 | THERMAL RELAY FINDER 66.828 230 VAC | M503352 | 1 | 2 |

S+S= SPRECHER + SCHUH

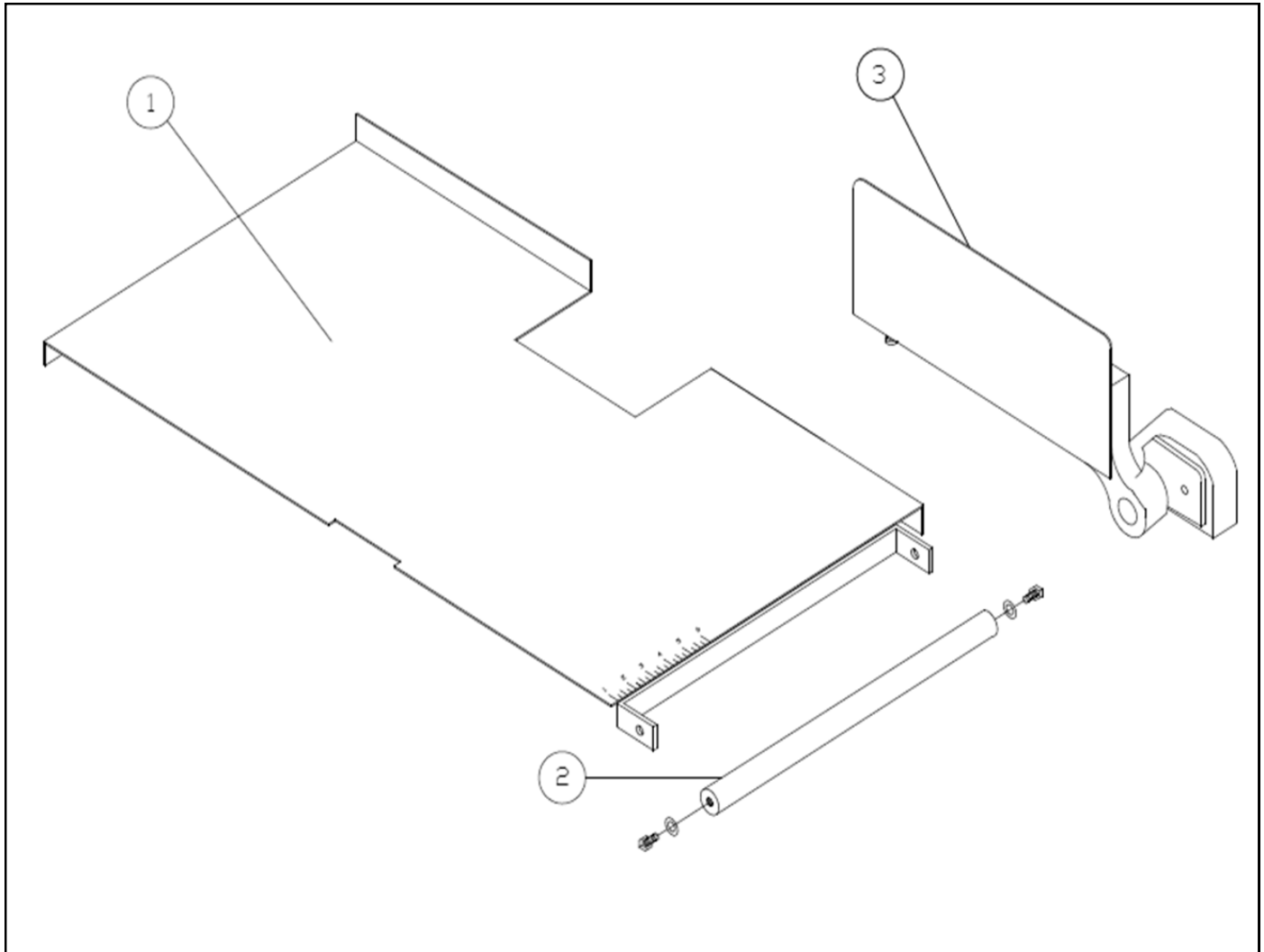
* IT CHANGES COMPONENTS STARTING FROM SERIAL NUMBER : G07-43923



| ITEM. | DESCRIPTION | CODE | QTY. | I.S./100 |
|-------|----------------------------------------|---------|------|----------|
| 1 | POWER CORD 3 PHASE (UL) | M500154 | 1 | 2 |
| 1 | POWER CORD SINGLE PHASE UL (NOT SHOWN) | M570856 | 1 | 2 |
| 2 | PAN (PLASTIC) | M500321 | 1 | 4 |
| 3 | PAN HANDLE KIT | M571818 | 1 | 4 |
| 4 | GUIDES BASE KIT | M571836 | 1 | 2 |
| 5 | LOWER GUIDE (S.S.) | M570512 | 1 | 1 |
| 6 | BOLT ROUND HEAD 1/4" x 1/2" | M500198 | 2 | 2 |
| 7 | FIBER GUIDE (MICARTA) | M570140 | 1 | 100 |
| 8 | DOOR SPRING KIT | M571820 | 1 | 20 |
| 9 | DANGER DECAL | M501255 | 1 | 2 |
| 10 | STOP CARRIAGE "V" BLOCK KIT | M572683 | 2 | 2 |
| 11 | STOP CARRIAGE BUMPER | M571290 | 2 | 4 |
| 12 | CARRIAGE GUIDE TYPE "V" ASSY. S.S. | M573117 | 1 | 2 |
| 13 | BOLTS, NUTS AND WASHER KIT | M572301 | 1 | 2 |
| 14 | PUSH BUTTON BOX KIT | M503982 | 1 | 2 |
| *15 | CONTACTOR LC1-D25-10 (110 VAC) POTENZA | M503351 | 1 | 2 |
| *15 | CONTACTOR LC1-D25-120 (220VAC) POTENZA | M503352 | 1 | 2 |

S+S= SPRECHER + SCHUH
 * IT CHANGES COMPONENTS STARTING FROM SERIAL
 NUMBER : J07-44223

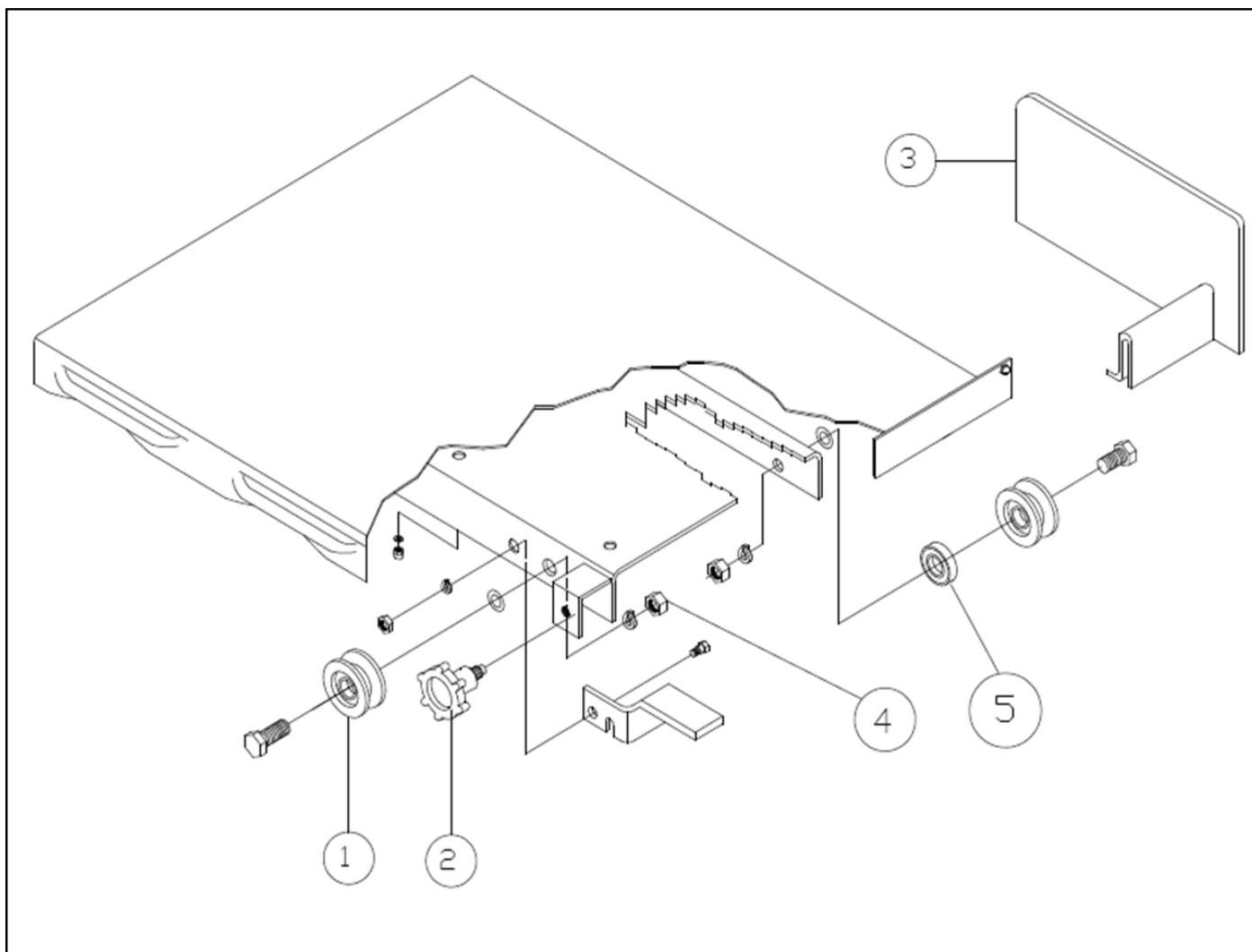
STARTING FROM SERIAL NUMBER: 21,405



| ITEM. | DESCRIPTION | CODE | QTY. | I.S./100 |
|-------|---------------------|---------|------|----------|
| 1 | TABLE ASSY. | M570628 | 1 | 1 |
| *2 | BAR ASSY. KIT | M573299 | 1 | 2 |
| 3 | GAUGE PLATE-R ASSY. | M572226 | 1 | 2 |

STARTING FROM SERIAL NUMBER: 405

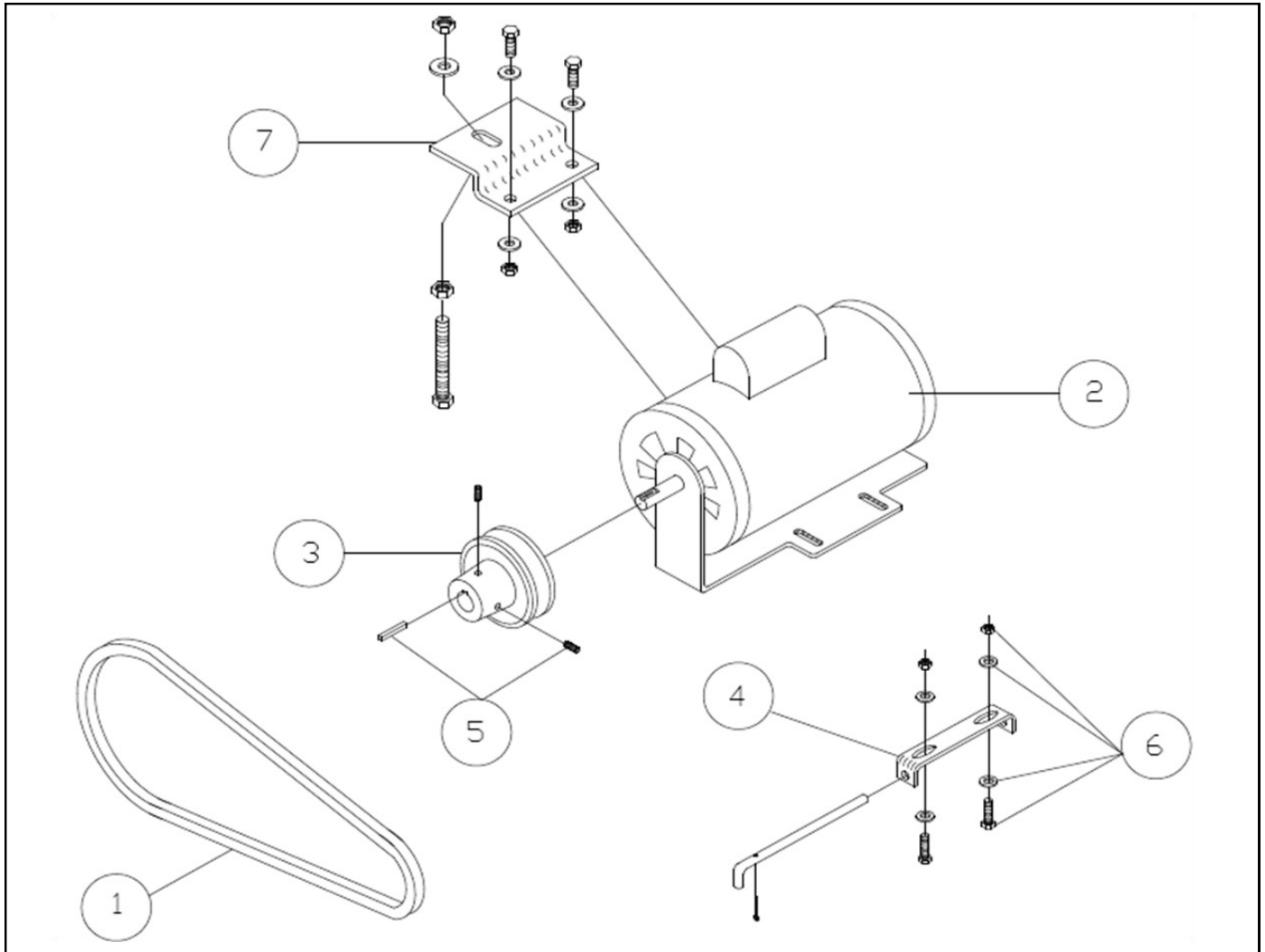
* STARTING FROM SERIAL NUMBER: 30289



| ITEM. | DESCRIPTION | CODE | QTY. | I.S./100 |
|-------|---------------------------------------------|---------|------|----------|
| *1 | S.S. WHEEL FOR CARRIAGE TYPE "V" | M574465 | 4 | 10 |
| 2 | KNOB | M571093 | 1 | 2 |
| 3 | LAST CUT PUSHER | M571618 | 1 | 2 |
| *4 | BOLTS, NUTS, S.S. KIT FOR CARRIAGE TYPE "V" | M573210 | 1 | 2 |
| *5 | BEARING | M503381 | 1 | 10 |
| | SLIDING CARRIAGE TYPE "V" KIT | M573161 | 1 | 1 |



* STARTING FROM SERIAL NUMBER: 29519



| ITEM. | DESCRIPTION | CODE | QTY. | I.S./100 |
|-------|-----------------------------------------------|---------|------|----------|
| 1 | * V-BELT # B-48 60Hz | M501088 | 1 | 2 |
| 2 | 1 1/2 HP MOTOR | M500173 | 1 | 2 |
| *2 | 2 HP MOTOR (60Hz) | M501286 | 1 | 2 |
| 2 | 2 HP MOTOR (50Hz) | M500986 | 1 | 2 |
| 3 | PULLEY 4" ø KIT (SHAFT ø5/8") 60Hz | M571887 | 1 | 2 |
| 3 | PULLEY 4" ø KIT (SHAFT ø7/8") 60Hz | M571840 | 1 | 2 |
| 4 | BRACKET - MOTOR KIT | M571888 | 1 | 2 |
| 5 | KEY AND SOCKET SET SCREW KIT | M572325 | 1 | 2 |
| 6 | BOLTS, NUTS AND WASHERS 5/16" KIT | M572326 | 1 | 2 |
| 7 | MOTOR BASE KIT | M572678 | 1 | 2 |
| | * 2 HP MOTOR KIT , INCLUDES ITEMS 2, 3, AND 4 | M571890 | 1 | 2 |
| | 1 1/2 HP MOTOR KIT , INCLUDES ITEMS 2,3 AND 4 | M501185 | 1 | 2 |
| | PULLEY 6" ø (SHAFT ø7/8") KIT 50Hz | M500191 | 1 | 2 |
| | PULLEY 6" ø (SHAFT ø5/8") KIT 50Hz | M570825 | 1 | 2 |
| | V-BELT #B-54 50Hz | M572519 | 1 | 2 |